



**DEPARTMENT OF  
COMPUTER SCIENCE  
AND ENGINEERING**



**TECHNICAL  
MAGAZINE**

**ACADEMICY YEAR 2021-2022**

**MALINENI LAKSHMAIAH WOMEN'S ENGINEERING COLLEGE**



(Approved by AICTE, Affiliated to JNTUK)  
(An ISO9001:2008 Certified Institution)  
Pulladigunta (Village), Vatticherukuru (Mandal),  
Guntur-522017, Andhra Pradesh, India  
**Department of Computer Science and Engineering**



## INDEX

SL NO	TITLE	PAGE NO
1	STRESS MONITORING	03
2	SHIP SMART	04
3	FEED THE PETS	05
4	FAKE CERTIFICATE DETECTION	08

## CSE DEPARTMENT

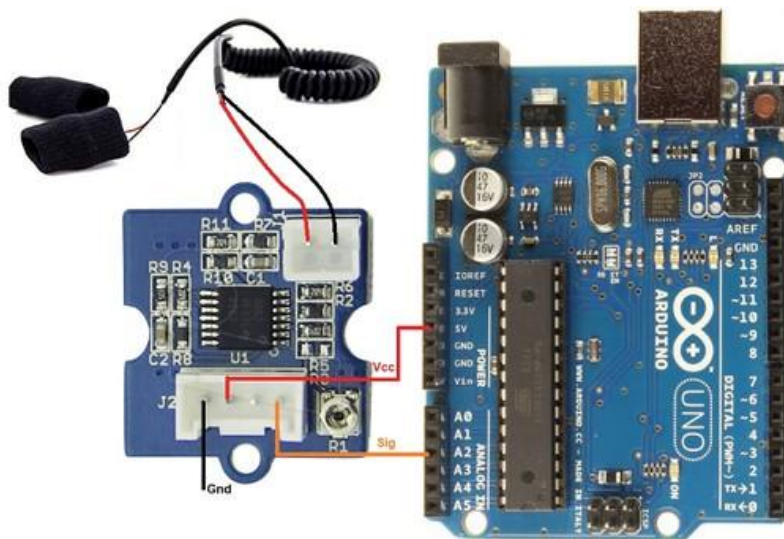
As the Head of the Computer Science and Engineering department, I am thrilled to see your enthusiasm and dedication. Embrace every challenge and opportunity, for it is through perseverance and innovation that we grow. Remember, the future of technology lies in your hands. Keep pushing boundaries, exploring new horizons, and never stop learning. Your passion and creativity are the driving forces that will shape the world. Together, let's make a mark in the ever-evolving tech landscape.

## STRESS MONITORING

Y Kalyani- 19KE1A05C5 , N.Lakshmi Priya-  
19KE1A0577 , K.Sravani-19KE1A0563

**MENTOR: Mrs. J.Annapurneswari , Asst. Prof.**

Stress is a natural response to the demands and pressures of life, affecting individuals in various ways. It can be triggered by numerous factors, including work- related challenges, relationship issues, financial concerns, and health problems. When we experience stress, our bodies react instinctively by releasing hormones that prepare us to deal with perceived threats. This reaction is part of the "fight or flight" response and involves the release of key hormones such as epinephrine, cortisol.



Fitbit helps you track your body's physical and emotional responses to stress and equips you with tools & techniques to manage them. All-day body-response tracking 1 uses physical indicators to help you see how your body reacts to all that life throws at you.

## SHIP SMART

B.Maha Lakshmi-18KE1A0512 , B.Supraja-  
18KE1A0502 , Ch.Bhargavi-18KE1A0521

**MENTOR: Mrs.N.Vijaya Lakshmi, Asst.Prof.**

We present a comprehensive solution to address key challenges faced by small-scale retailers through our innovative ShipSmart platform. This platform simplifies delivery, making the process seamless for customers. ShipSmart facilitates efficient order deliveries in both local and remote areas, enhances the availability of niche products, and fosters new business opportunities for small-scale retailers. By tackling these issues, our platform supports local businesses and ensures that customers receive their orders effortlessly, regardless of their location. ShipSmart aims to revolutionize the delivery landscape by bridging gaps and empowering small retailers to thrive in a competitive market.





## FEED THE PETS

Y.Likitha-18KR1A05B6 , K.Manisha-  
18KE1A0563 , P.Himaswathi Sri-18KE1A0571

**MENTOR: Mr.B.Rama Raju , Asst.Prof.**

The pet feeding device is designed to be simple, efficient, and cost-effective, making it accessible for anyone to use. This innovative device allows pet owners to feed their pets from virtually anywhere, regardless of network availability. Utilizing Google Assistant integration, users can effortlessly schedule and dispense meals for their pets with voice commands.

This ensures that pets receive their food on time, even when owners are away from home or busy with daily tasks. With its user-friendly features and flexibility, this device offers a convenient solution for maintaining a regular feeding routine for beloved furry companions.

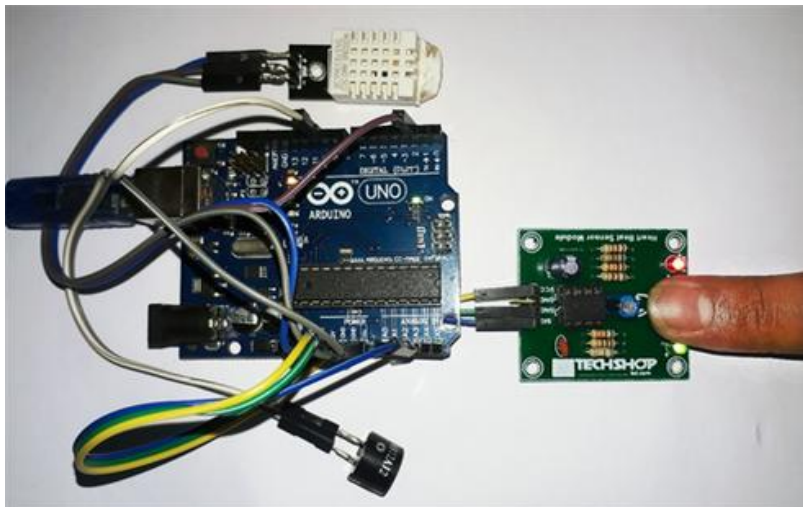


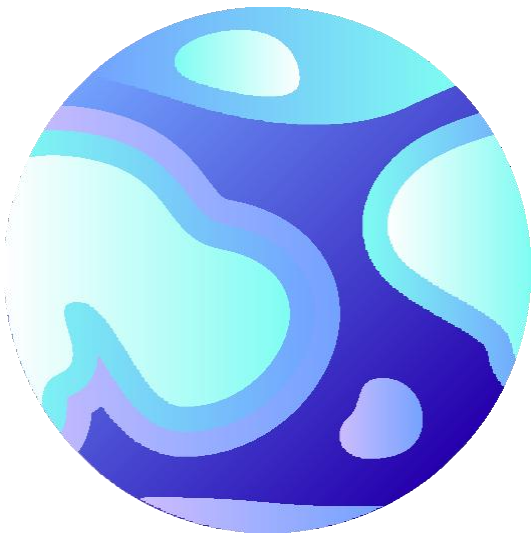
## Post-Op Angina Detector

Y.Govardhani-22KE1A05M9 , T.Indu-  
22KE1A05K3, Vishnu Priya-

### MENTOR:

Angina detectors are innovative medical devices designed to detect and monitor chest pain in heart patients. Particularly crucial after stent placement, these devices ensure timely intervention and optimal treatment. Angina detectors provide real-time monitoring improving patient outcomes and enhancing quality of life .The chest pain caused by reduced blood flow to the heart is usually managed and monitored using several diagnostic tools and treatments . The goal is to assess the severity of coronary artery disease and prevent angina episodes while reducing the risk of a heart attack. The Angina detector system offers a practical and innovative solution to monitor and assess heart pain after stent operations . By combining wearable sensors with a mobile application for patient input, the system can detect and quantify the severity of angina in real-time.





## METaverse EXPLORATION

The metaverse is revolutionizing digital interactions by blending augmented reality (AR), virtual reality (VR), and Blockchain into a seamless, immersive experience. This evolving digital universe allows users to socialize, work, shop, and create in vibrant virtual spaces. With interoperability, decentralization, and Blockchain security, the metaverse extends beyond gaming, impacting industries like education, healthcare, and entertainment. Though promising, it faces challenges like privacy concerns and accessibility, but its potential to reshape our digital lives is undeniable.

## **FAKE CERTIFICATE DETECTION**

S.Sravani-20KE1A0598 , P.Jwala Avigna-20KE1A0581

M.Sneha Latha Reddy-20KE1A0563

**MENTOR:Mr.P.Venu babu , Asst.Prof.**



The project introduces a cutting-edge system that integrates IOT and Blockchain technologies to effectively detect and prevent the issuance of fake certificates. This data is securely stored in an immutable blockchain ledger, which provides a transparent and reliable method for certificate verification. Employers, educational institutions, and other stakeholders can easily confirm the authenticity of certificates issued by various organizations, thereby enhancing trust in credentialing processes. Ultimately, this innovative solution aims to reduce fraud while promoting integrity in educational and professional certifications.



# HUSTLING OF BITCOIN



The year started with Bitcoin trading around \$47,000 but faced a sharp decline in the first half, exacerbated by macroeconomic factors like inflation and supply chain disruptions. The collapse of TerraUSD in May 2022 and the FTX bankruptcy in November further impacted the market<sup>1</sup>. Despite these hurdles, Bitcoin remained a dominant force in the cryptocurrency space, with increased institutional interest and continued development in decentralized finance (DeFi) and non- fungible tokens (NFTs).

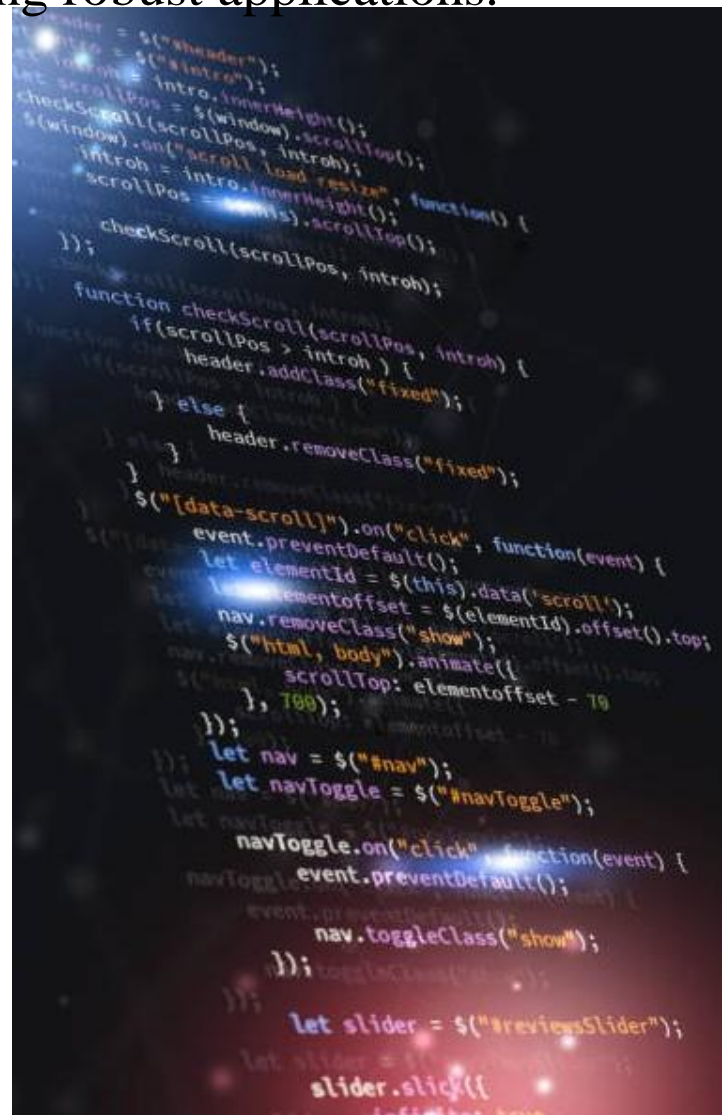


# SOCIAL COMMERCE

- Social commerce, the integration of e-commerce and social media, experienced significant growth from 2021 to 2022. This trend enabled consumers to discover and purchase products directly through social media platforms, providing a seamless and engaging shopping experience.
- Key drivers included the increasing use of mobile devices, personalized shopping experiences, and the influence of social media influencers.
- Social commerce generated substantial revenue, with an impressive annual growth rate projected to continue. The global social commerce market size was valued at \$474.76 billion in 2020 and is expected to reach \$3.37 trillion by 2028, growing at a compound annual growth rate (CAGR) of 28.4% from 2021 to 2028.
- This trend reshaped the retail landscape, making shopping more convenient, interactive, and accessible for consumers worldwide.

## KOTLIN OVER JAVA

In the digital era, Kotlin emerged as a modern, efficient alternative to Java, particularly for Android development. Its concise syntax, null safety, and interoperability with Java fueled its adoption. Between 2021 and 2022, Kotlin's evolution included enhanced tools, expanding multi-platform support, and increased community contributions. It became the preferred language for Android apps, surpassing Java due to its productivity benefits and improved developer experience in building robust applications.



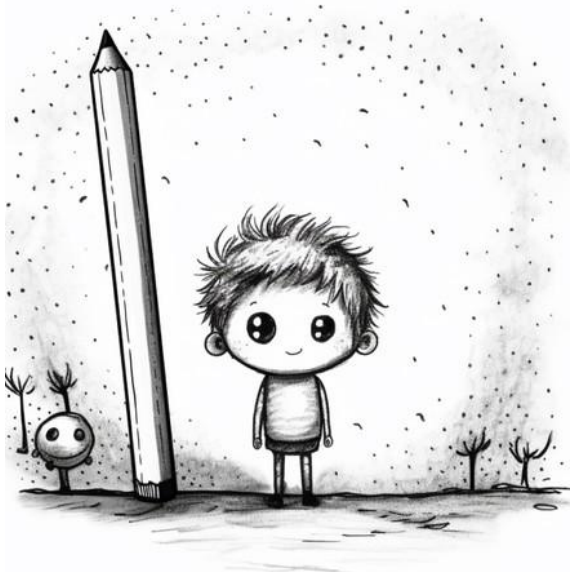




# SOCIAL COMMERCE

- Social commerce, the integration of e-commerce and social media, experienced significant growth from 2021 to 2022. This trend enabled consumers to discover and purchase products directly through social media platforms, providing a seamless and engaging shopping experience.
- Key drivers included the increasing use of mobile devices, personalized shopping experiences, and the influence of social media influencers.
- Social commerce generated substantial revenue, with an impressive annual growth rate projected to continue. The global social commerce market size was valued at \$474.76 billion in 2020 and is expected to reach \$3.37 trillion by 2028, growing at a compound annual growth rate (CAGR) of 28.4% from 2021 to 2028.
- This trend reshaped the retail landscape, making shopping more convenient, interactive, and accessible for consumers worldwide.





"Treat yourself with kindness and  
watch your world transform  
beautifully."



“Believe in your infinite  
potential .”

**M.Sri Gayathri**  
**2nd year,CSE**

- In the mirror's gentle gaze, do you see? A light that shines from deep within, Not bound by form, fleeting youth, But a radiant soul, pure and true.
- Embrace the flaws, the scars, the lines, For they are marks of journeys tread. In the quiet moments, find your peace, And cherish all the life you've led.
- Self-love blooms like a timeless rose, Its fragrance sweet, its petals strong other's words can dim its glow, For inner beauty sings its song.
- With every breath, a new refrain, Of kindness, strength, and grace untold. You are enough, just as you are, A story of love, waiting to unfold.



CH.Pavithra  
2<sup>nd</sup> Year C.S.E



# MALINENI LAKSHMAIAH WOMEN'S ENGINEERING COLLEGE

(Approved by AICTE, Affiliated to JNTUK)

*(An ISO9001:2008 Certified Institution)*

Pulladigunta (Village), Vatticherukuru (Mandal),

Guntur-522017, Andhra Pradesh, India



**Department of Computer Science and Engineering**







